

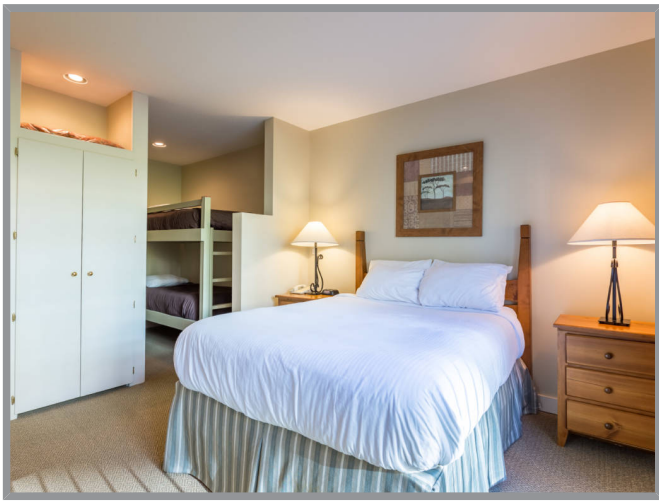
339/340 150 Silver Lode Lane, Silver Star, BC



CILCOOT HOTEL AND CONFERENCE CENTRE

Invest in your own enjoyment! A leasehold hotel/apartment unit in the Chilcoot Hotel and Conference Centre in the very heart of Silver Star Mountain Ski Resort. The Hotel management handles everything and owners can book their units for personal use! Fully furnished and equipped - this unit offers a main suite with an open living room, full kitchen, bath, master bedroom, and a bunk bed alcove PLUS a lock-off bedroom with two queen beds and bath. Rented as one or two units! Building amenities include rooftop hot tubs, shared laundry, and owner storage lockers. The Chilcoot features the only convention facility in an Okanagan ski resort which contributes to rental opportunities. All owners enter into a Management Agreement and become GST registrants. Approx. 99-year lease! All pre-existing guest bookings must be honored by Buyers.





Specifications

MLS® #
10240440

Year Built
1994

Home Size

Main Level
893 sq. ft.

Bathrooms
2

Strata Inclusions
CareTaker, Contingency Reserve, Heat, Landscaping, Light, Management, Recreational Facilities, Road Maintenance, Sewer, Snow Removal, TAXES, Trash Removal, Water

Services
Services Available, Silver Hawk Sewer, Municipal Water

School District
SD/22

Neighborhood
Silver Star

Zoning
VC

Total Square Footage
893 sq. ft.

Bedrooms
3

Strata Fees
\$1,104



Features

CHILCOOT LODGE AND CONFERENCE CENTRE

- The Chilcoot Lodge and Conference Centre are part of the Vance Creek Hotel and is located in the heart of Silver Star Village, steps from restaurants, pubs, shopping, rentals and all the Village amenities and entertainment
- A great ski-in, ski-out location. Each suite is a spacious combination of two bedrooms and two baths with a guest room lock-off for maximum rental efficiency
- Ski-in, ski-out
- Nearest Run/Lift: Silver Queen Chair, Summit Express Gondola, Main Street Skiway
- Walk to: Village Centre

BUILDING

- Type: Condominiums, leasehold
- Year Built: 1994
- Buildings: 1
- Stories: 4
- Units: 17
- Construction Features: Wood frame construction. Stucco exterior. Torch-on roof
- Utilities & Services: Hydro, Natural Gas, Telecommunications, Shaw Cable, Silver Hawk Sewer, Municipal Water
- Parking: Public parking, adjacent lot
- Ski storage: Assigned ski lockers
- Features: Central lobby/reception. Rooftop hot tubs; 2 in Chilcoot, 1 in Vance Creek. One elevator, Wheelchair Accessible, Daily Maid Service, Coin Laundry. Chilcoot Conference Centre - 2,964 sq. ft on the lower level, accommodates up to 350 people and offers a large lobby for pre-function receptions, kitchen and washrooms
- Pets Friendly: Yes - with restriction

CONDOS

- Size (approximate):
 - 2 BR, 2 BATH, Kitchenette, with Bunk Alcove, with lock-off (893 sq. ft.)

STRATA

- Strata Fee Inclusions: Administrative fee, common area maintenance, contingency, fire alarm maintenance, garage removal, gas, landscaping/snow removal, hot tub, hydro, insurance (common), property taxes, security, sewer, telephone, television/internet, waste transfer, water
- Pets Friendly: Yes, designated units

RENTALS

- Rental Policy: Units operate as Hotel Accommodation or for restricted personal use by the owner of the unit. Owners' use is The Manager's revenue is 40% of revenue generated, 100% of all other revenue and 100% of Daily Standby Charges paid during the month, subject to usage and cleaning fees.
- Strata Management Company: Gateway Property Management

SILVER STAR MOUNTAIN RESORT FEE

- Silver Star Mountain Resort Fee: There is an annual resort fee applicable to each unit.

UNITS 339/340

- 2 Bedroom plus bunks and 2 bath suite in the established conference hotel



- The main suite is fully furnished with an open concept dining/living room with a gas fireplace
- Spacious dining area
- Full kitchen
- Generous size master bedroom with a separate side room with bunk bed
- Guest room lock-off for maximum rental efficiency. Flexible configuration allows continued income while the owner is in the main unit
- Guest room lock-off features 2 queen beds, bar fridge, TV and desk



