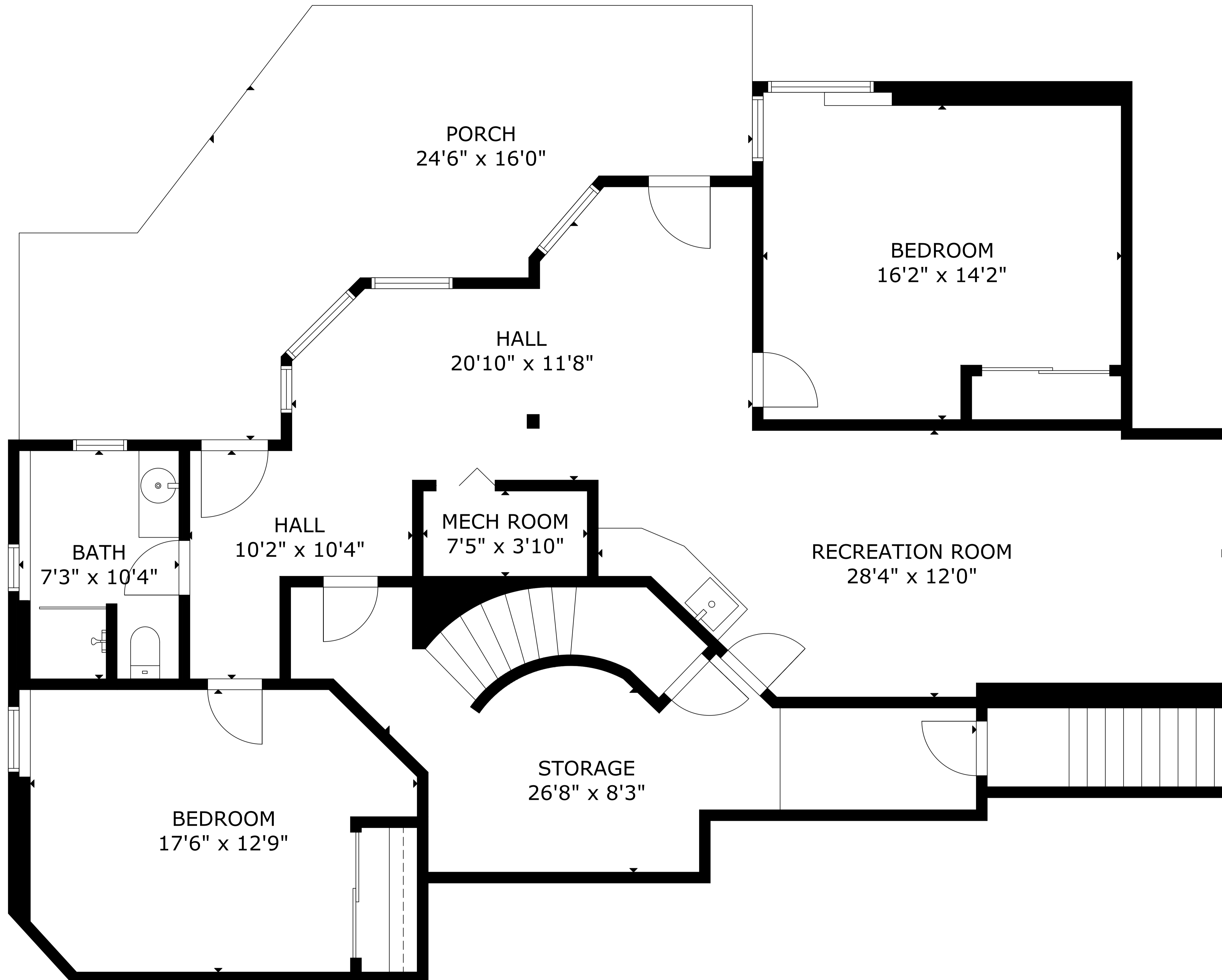


GARAGE  
19'1" x 26'10"

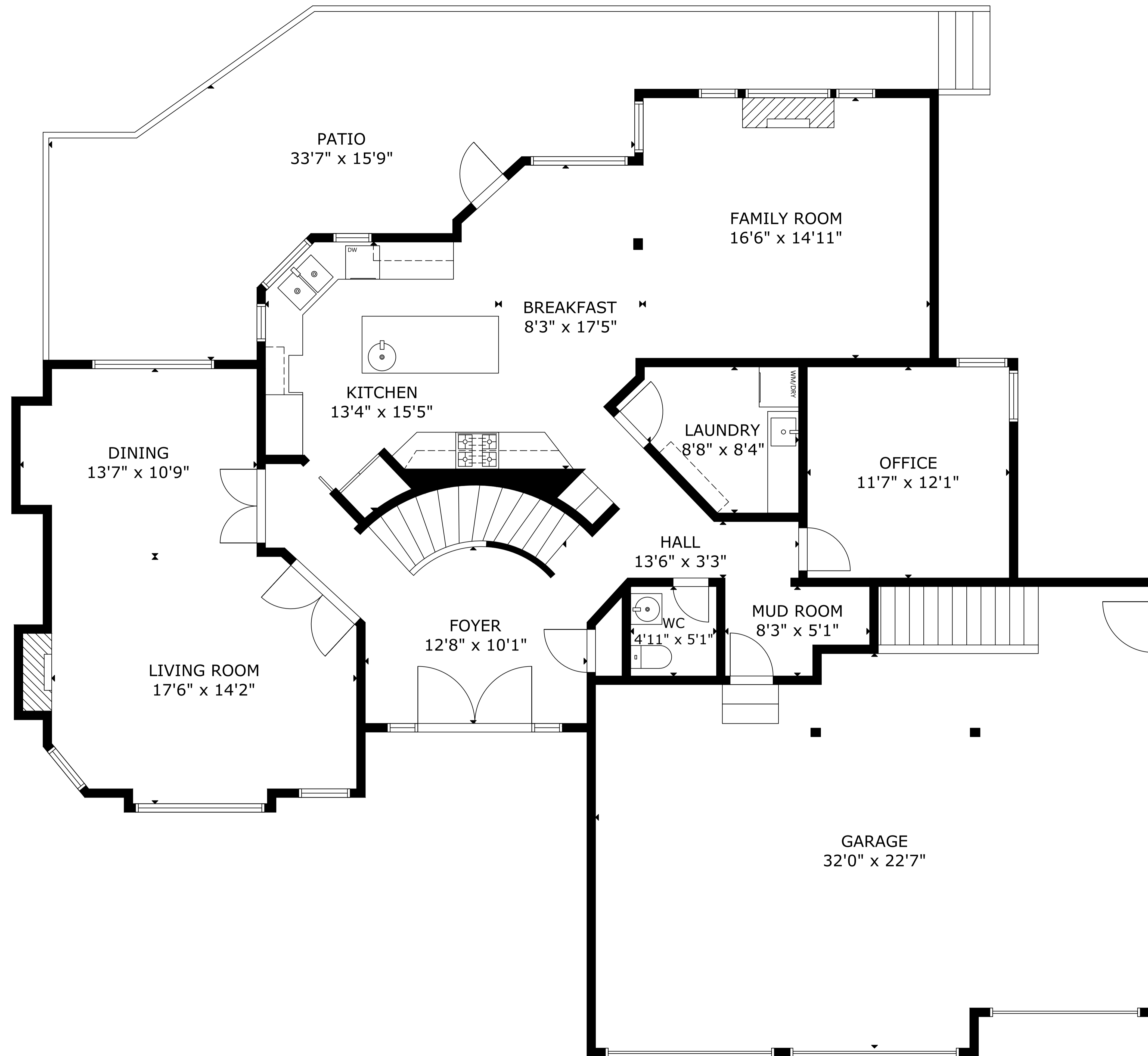
MECH ROOM  
4'11" x 6'1"

GROSS EXTERNAL AREA  
TOTAL: 4,692 sq ft  
BASEMENT: 1,584 sq ft, MAIN FLOOR: 1,630 sq ft  
UPPER LEVEL 1: 1,478 sq ft  
EXCLUDED AREA: PORCH: 364 sq ft, GARAGE: 736 sq ft  
SHOP: 512 sq ft, MECH ROOM: 29 sq ft, PATIO: 484 sq ft  
SIZE AND DIMENSIONS ARE APPROXIMATE, ACTUAL MAY VARY.



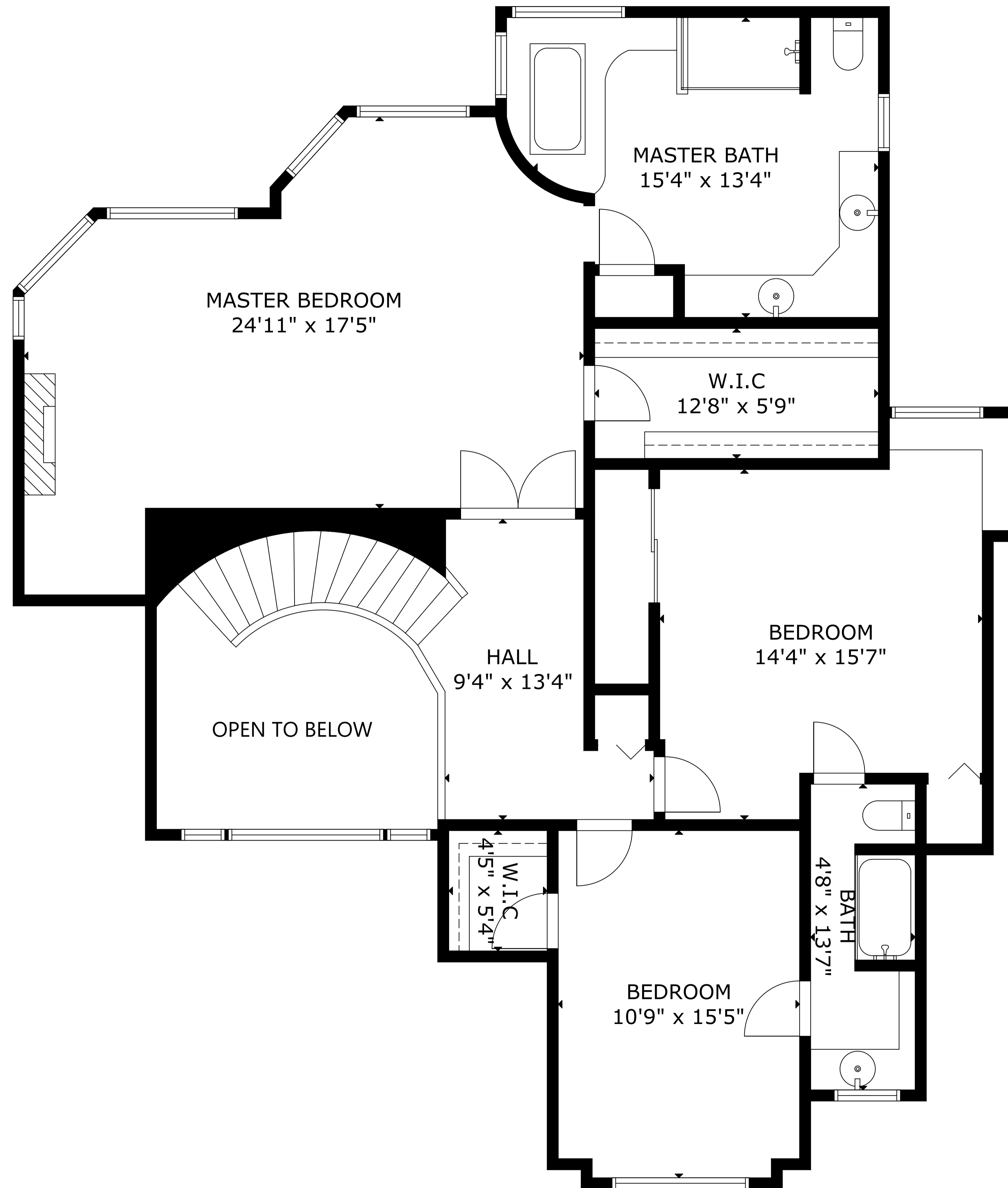
BASEMENT

GROSS EXTERNAL AREA  
 TOTAL: 4,692 sq ft  
 BASEMENT: 1,584 sq ft, MAIN FLOOR: 1,630 sq ft  
 UPPER LEVEL 1: 1,478 sq ft  
 EXCLUDED AREA: PORCH: 364 sq ft, GARAGE: 736 sq ft  
 SHOP: 512 sq ft, MECH ROOM: 29 sq ft, PATIO: 484 sq ft  
 SIZE AND DIMENSIONS ARE APPROXIMATE, ACTUAL MAY VARY.



MAIN FLOOR

GROSS EXTERNAL AREA  
 TOTAL: 4,692 sq ft  
 BASEMENT: 1,584 sq ft, MAIN FLOOR: 1,630 sq ft  
 UPPER LEVEL 1: 1,478 sq ft  
 EXCLUDED AREA: PORCH: 364 sq ft, GARAGE: 736 sq ft  
 SHOP: 512 sq ft, MECH ROOM: 29 sq ft, PATIO: 484 sq ft  
 SIZE AND DIMENSIONS ARE APPROXIMATE, ACTUAL MAY VARY.



GROSS EXTERNAL AREA  
 TOTAL: 4,692 sq ft  
 BASEMENT: 1,584 sq ft, MAIN FLOOR: 1,630 sq ft  
 UPPER LEVEL 1: 1,478 sq ft  
 EXCLUDED AREA: PORCH: 364 sq ft, GARAGE: 736 sq ft  
 SHOP: 512 sq ft, MECH ROOM: 29 sq ft, PATIO: 484 sq ft  
 SIZE AND DIMENSIONS ARE APPROXIMATE, ACTUAL MAY VARY.