

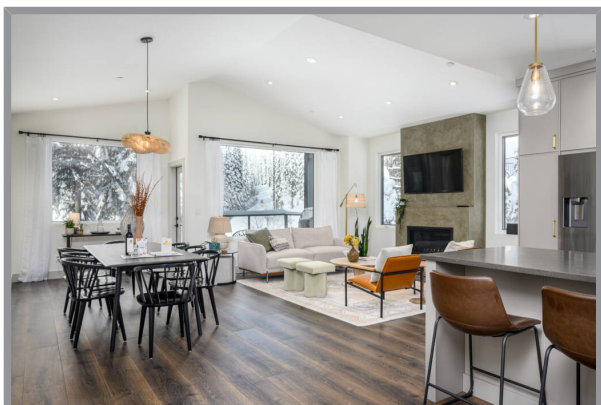
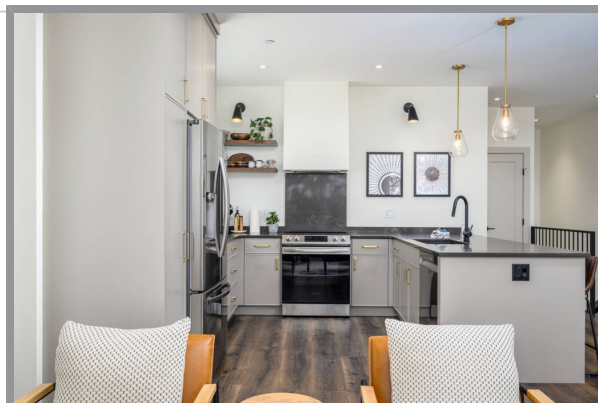
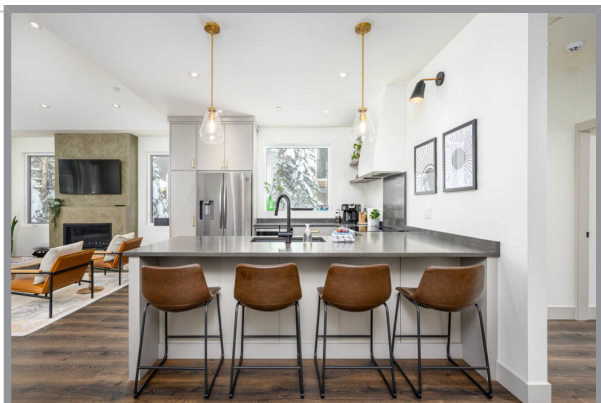
9929 Cathedral Drive, Silver Star, BC



1/2 DUPLEX on THE RIDGE

Welcome to Raven on the Ridge – Discover mountain living at its finest in this 3-bed, 3.5-bath 1/2 duplex on Silver Star Mountain. Completed in 2022, the contemporary residence seamlessly blends modern with comfort, featuring a thoughtfully designed bedroom with 4 built-in bunk beds for added versatility, a ski room with convenient powder room and a proven rental track record! This property offers not just a personal retreat but also a great investment opportunity. With prime ski in/out access – ski way right behind the house! Hot tub and BBQ off of the upstairs balcony for easy access to the kitchen. Turnkey – just bring your gear! Garage and storage to keep your gear safe and easily accessible. Embrace the convenience of contemporary living in the heart of the mountains – your prime choice for a stylish and well-designed mountain escape. Raven on the Ridge offers the perfect blend of luxury and adventure. Whether you're a snowsports enthusiast, mountain biker, or someone seeking a tranquil escape in a breathtaking setting, this home offers it all! GST applicable.





Specifications

MLS® # 10302965	Neighborhood Vernon
Year Built 2021 - completed in 2022	Zoning R2
Lot Frontage 29.5'	Lot Depth 154'
Home Size	
Total Square Footage 1980 sq. ft.	Main Level 855 sq. ft.
Upper Level 1125 sq. ft.	Bedrooms 3
Bathrooms 3.5	Taxes TBD
Services Hydro, Natural Gas, Telecommunications, Silver Hawk Sewer, Municipal Water	
School District SD22	



