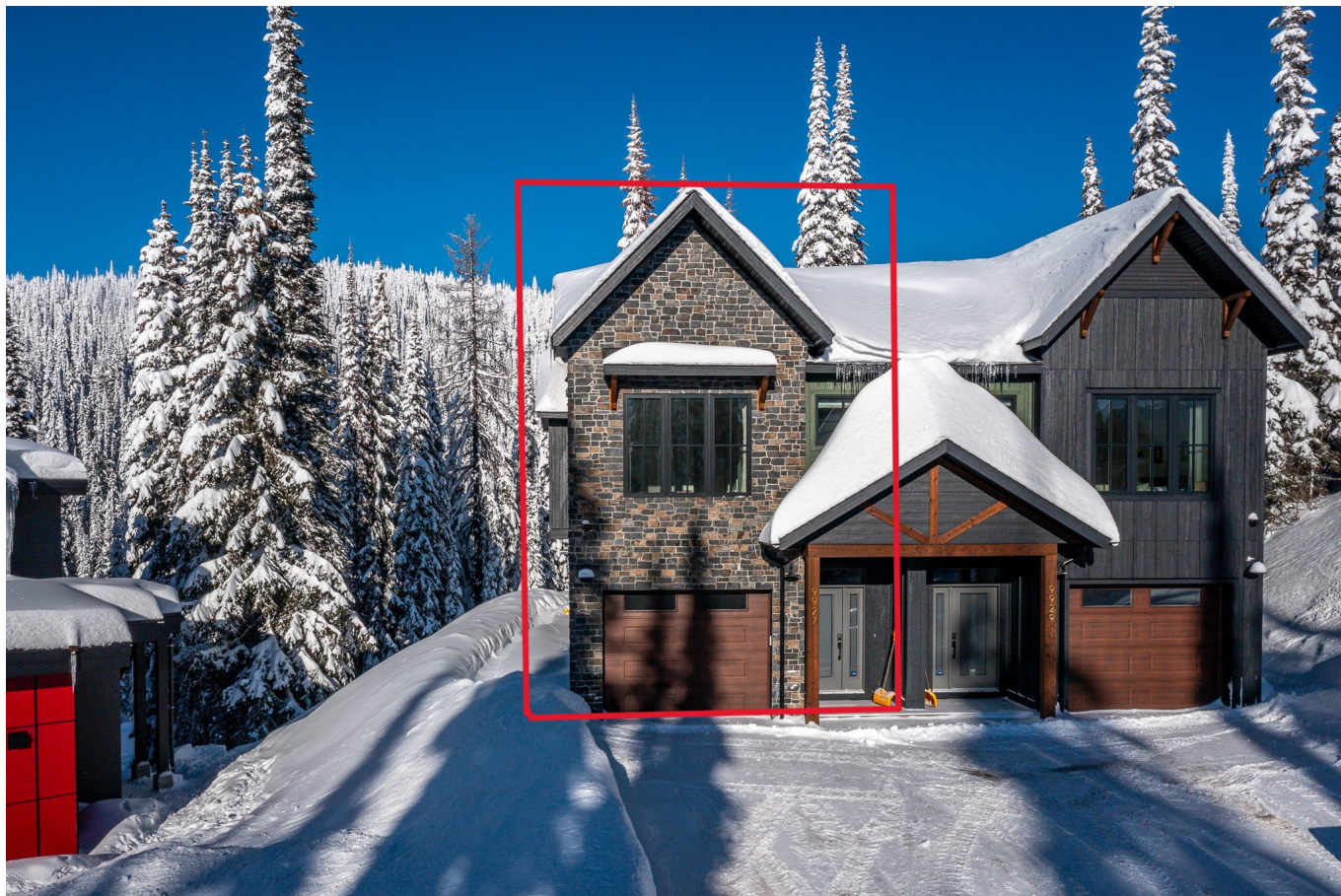


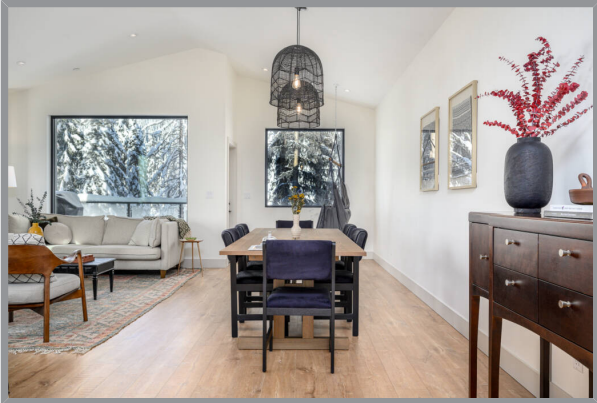
9927 Cathedral Drive, Silver Star, BC



1/2 DUPLEX on THE RIDGE

Introducing Raven on the Ridge, your gateway to contemporary mountain living on the prestigious Silver Star Mountain – a haven for snowsports and biking enthusiasts alike! This newer 1/2 duplex, completed in 2022, stands as a beacon of modern comfort. Step into this stylish residence featuring 3 bedrooms and 3.5 bathrooms spread across 1986 sqft, meticulously adorned and fully equipped for your utmost enjoyment. The inclusion of a bunkroom with 4 beds makes it an ideal space for kids or additional guests, adding versatility to the property. Raven on the Ridge isn't just a mountain retreat; it's a wise investment opportunity with its proven rental income. Take advantage of the incredible ski in/out – ski way right behind the house! Unwind in the private hot tub and savor the mountain views while cooking up a feast on the natural gas BBQ – all from the comfort of your own modern oasis. Convenience meets security with a dedicated garage providing shelter for your vehicles and outdoor gear. Designed for modern living with high-end finishes and fixtures throughout with thoughtful intentional design. Whether you're a snowsports enthusiast, mountain biker, or someone seeking a tranquil escape in a breathtaking setting, Raven on the Ridge offers the perfect blend of luxury and adventure. Don't miss the opportunity to make this mountain retreat your own and experience the unparalleled lifestyle that Silver Star Mountain has to offer.





Specifications

MLS® #
10302957

Year Built
2021 - completed in 2022

Lot Frontage
29'

Neighborhood
Silver Star

Zoning
R2

Lot Depth
210'

Home Size

Total Square Footage
1986 sq. ft.

Upper Level
1126 sq. ft.

Bathrooms
3.5

Main Level
860 sq. ft.

Bedrooms
3

Taxes
TBD

Services
Hydro, Natural Gas, Telecommunications, Silver Hawk Sewer, Municipal Water

School District
SD22



