

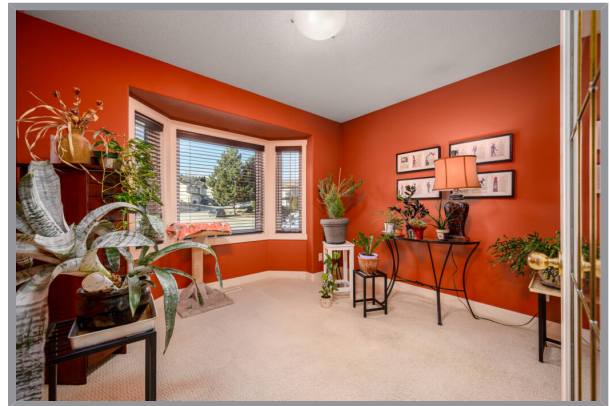
1002 Mt. Bulman Drive, Vernon, BC



### Middleton Mountain - 3 BEDROOM UP, 2 BEDROOM DOWN

Welcome to Middleton Mountain! Quiet residential streets are perfect for busy families with Sawicki Park just down the road, invites group play, pickle ball, tennis & basketball. The backyard is fenced and ready for children and pets! This is the perfect floor plan for your young and growing family! 3 bedrooms on the main keeps younger children close and the walk-out basement offers 2 more bedrooms and loads of room when it's time to give them their own space! Light filled open concept, hardwood floors, gas fireplace and a large, partially covered deck off the main level. Well planned kitchen with island and stainless appliances. 3 baths including ensuite with separate tub and shower. Family room on the lower level opens to the covered patio and backyard. Lots of storage plus garden shed. Near new central air conditioning. Double garage and easy access, level parking. Hillview Elementary and VSS (Vernon Senior Secondary) are minutes away!





## Specifications

MLS® #  
10307426

Year Built  
2003

Lot Size  
0.18 acres

Lot Depth  
111'

Main Level  
1327 sq. ft.

Bedrooms  
5

Taxes  
\$3,597.00 - 2022

Services  
Hydro, Natural Gas, Telecommunications, Sewer, Municipal Water

School District  
SD22 - Hillview and VSS catchment

Neighborhood  
[Middleton Mountain](#)

Zoning  
R2

Lot Frontage  
72'

## Home Size

Total Square Footage  
2554 sq. ft.

Lower Level  
1227 sq. ft.

Bathrooms  
3



