

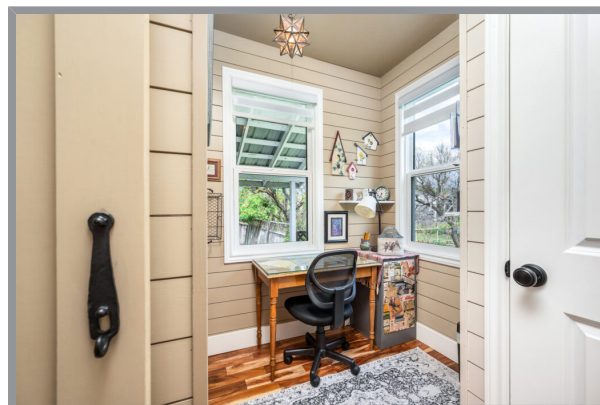
6934 HWY 6, Coldstream, BC



### FARMHOUSE ON 2.22 ACRES

Step into a simpler time with this charming and thoughtfully updated 1950s farmhouse, nestled on 2.22 acres of beautiful flat, usable land in the ALR. Full of warmth, character, and timeless appeal, this quaint country retreat blends nostalgic farmhouse charm with modern comforts in an unforgettable natural setting. The 3-bedroom, 2-bath home has been lovingly maintained and updated while preserving its cozy heritage feel. Enjoy peaceful mornings on the expansive covered deck overlooking lush gardens, mature fruit trees, and your own private sanctuary beyond. The property backs onto a magical creek and protected bird sanctuary, where ducks glide across the pond and nature surrounds you in every season. Outbuildings provide endless possibilities for hobbies, storage, workshop space, or small hobby farming, while the sprawling grounds offer room to garden, play, or simply soak in the tranquility of rural living. Rarely does a property offer this much charm and connection to nature — all on flat, usable acreage. A truly special place to call home. Recent upgrades on feature sheet in supplements.





## Specifications

MLS® #  
10388747

Year Built  
1951

Lot Size  
2.22 acres

Main Level  
983 sq. ft.

Lower Level  
317 sq. ft.

Additional Sq. Ft.  
676

Bedrooms  
3

Taxes  
\$1,328.59 - 2025

Services  
Hydro, Natural Gas, Septic, Municipal Water

School District  
SD22

Neighborhood  
Coldstream

Zoning  
A2

## Home Size

Total Square Footage  
1805 sq. ft.

Upper Level  
505 sq. ft.

Bathrooms  
3



